

INDUSTRIAL HEALTH & SAFETY REVIEW

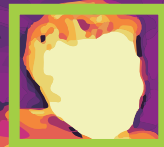
India's Leading Monthly Magazine on Health | Safety | Fire | Security Industry

www.isrmag.com

Hikvision Temperature Screening Thermographic Solutions

SAFER, FASTER, SMARTER

36.5° C



HIKVISION

See Far, Go Further



Handheld Camera
+ Tripod
+ iVMS-4200 or Hik-Thermal
(Mobile app)

Accuracy: $\pm 0.5^{\circ} \text{C}$



With a Wi-Fi module, the TP21B handheld camera can connect to a PC or a smartphone to notify operators when a person with an elevated temperature passes by. It also features a built-in speaker for audio alarms.

Temperature Screening Thermographic Cameras

Temperature measurement range: 30-45°C
Working temperature: 10-35°C

DS-2TD2636B/P

AI Detection

384*288 thermal resolution

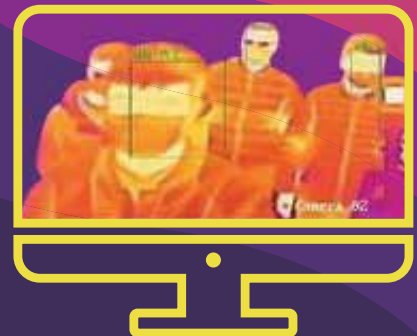
15 mm thermal lens (Recommended camera-target distance: 4.5-9 m) 6 mm optical lens



High Efficiency
One second to detect temperature in a person

Increased Safety
Non-contact measurement to avoid physical contact

Temperature Screening Solutions



Corporate Office:
Prama Hikvision India Pvt. Ltd.
Oberoi Commerz 2, International Business Park,
18th Floor, Near Oberoi Mall, Off W.E. Highway,
Goregaon (East), Mumbai - 400 063.
Tel: +91-22-6855 9900 / 4041 9900
Web: www.hikvisionindia.com



Sales
+91-22-6855 9944
sales@pramahikvision.com



Technical Support
+91-22-6822 9999, 3322 6060, 2846 9999
support@pramahikvision.com
Toll Free - 1800 222 699



Marcom
+91-22-6855 9933
marcom@pramahikvision.com



RMA Support
+91-22-6822 9977, 3322 6070, 2846 9977
0250 663 6677
rma@pramahikvision.com



reddot design award
best of the best 2012



LAUNCHED
in clean agent
variant

Firephant[®]
DESIGNED FOR LIFE
by GUNNEBO
For a safer world



*Red colour model is approved under IS:15683

Firephant 1 kg

The 1 kilo Firephant is a compact and easy to use piece of fire protection equipment. It effortlessly extinguishes minor fires in the homes and serves as a complement to a 6 kg powder extinguisher.

Diameter : 114 mm

Height : 279 mm

Classes of fire : ABC

Extinguishing Agent : Mono Ammonium Phosphate 90% and UL approved Clean Agent (FK5112)
FK5112 has zero ODP and low GWP

Performance rating : 1A 34B for MAP 90 Powder Type
1A 13B for Clean Agent (FK5112) Type

Areas of use : Modern Homes, Villas, Hotels, Offices, Corporate Buildings, Cars, etc.

Firephant 2 kg

The 2 kilo Firephant is an easy to use and dependable piece of fire protection equipment. Its extinguishing performance is the highest in its class currently in the market and can be used for all types of minor fires when a 6 kg powder extinguisher may be too large.

Diameter : 114 mm

Height : 374 mm

Classes of fire : ABC

Extinguishing Agent : Mono Ammonium Phosphate 90% and UL approved Clean Agent (FK5112)
FK5112 has zero ODP and low GWP

Performance rating : 2A 55B for MAP 90 Powder Type
2A 21B for Clean Agent (FK5112) Type

Areas of use : Modern Homes, Villas, Hotels, Offices, Corporate Buildings, Cars, etc.

Operating Instructions



Pull the Pin



Press the release button

For more information:

Gunnebo India Pvt. Ltd.

Call: 1800 22 3525, 1800 209 3040 (Toll Free), 022 6780 3600 | Email us at: Fireproducts.India@gunnebo.com | www.gunnebo.in

INDUSTRIAL HEALTH & SAFETY REVIEW

www.isrmag.com

India's Leading Monthly Magazine on Health | Safety | Fire | Security Industry

FIGHTING THE COVID 19 BATTLE

PG. 10 - 14



15 04 04 2020 150



AUTOGLO[®]
PHOTOLUMINESCENT SIGNAGES



Extremely versatile life safety systems, offering simple and dependable solutions to fire detection



PREMIUM QUALITY

Hochiki endeavours to create high quality products to ensure long term reliability and performance.



FALSE ALARM REDUCTION

Driven with a world proven open protocol featuring false alarm reduction algorithms and variable sensitivity.



SIMPLE INSTALLATION

Simple installation and integration, resulting in cost minimisation.



FULLY COMPLIANT

Compliant to world recognised standards, such as EN, UL and FM.



REDUCED COST OF OWNERSHIP

Reliability and system integrity ensure minimum maintenance and a reduced total cost of ownership (TOC).



OPEN PROTOCOL

Open protocol allows for increased choice and flexibility when designing the fire safety system.



www.hochiki.in | info@hochiki.in
www.hochikieurope.com/HFP

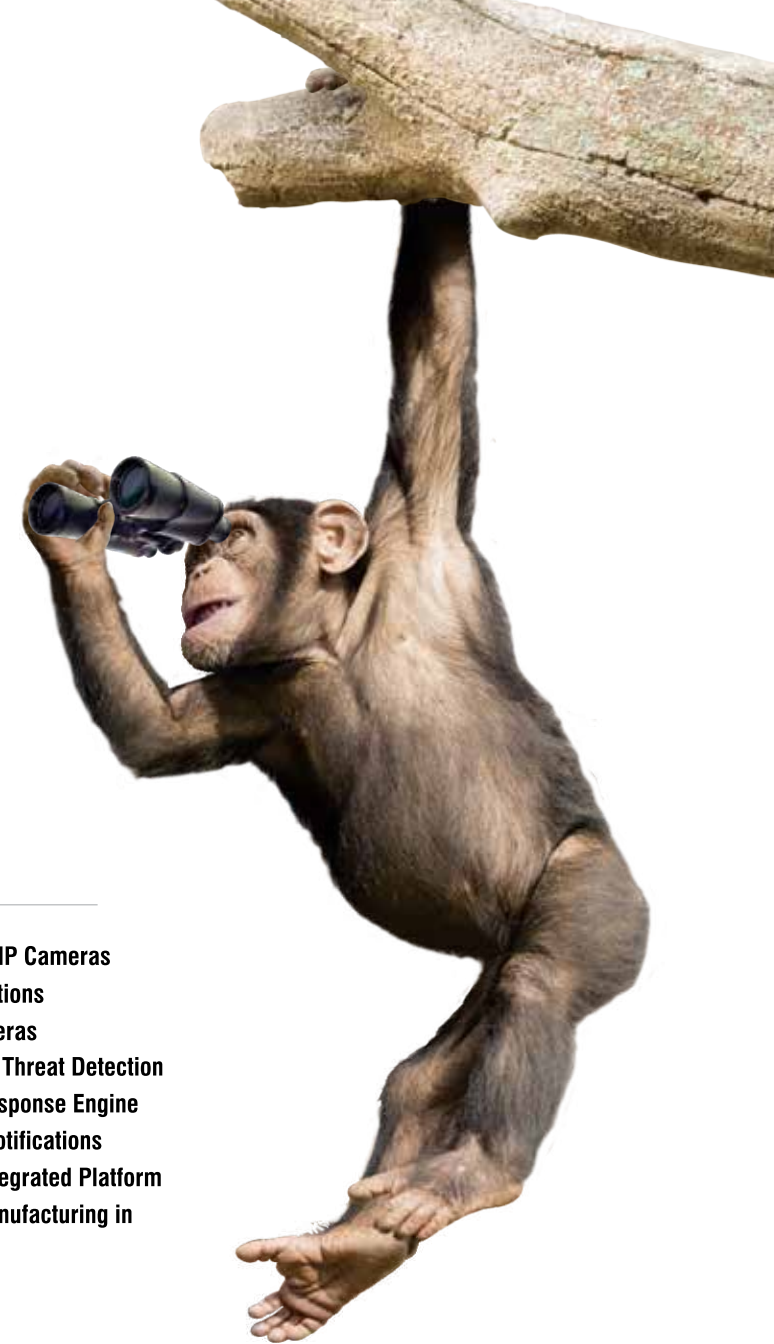
OUTDATED CCTV REDUCES YOUR SECURITY TO A MONKEY BUSINESS

EVOLVE TO MATRIX THE ANALYTICS DRIVEN COGNITIVE VIDEO SURVEILLANCE

Unlike outdated, hardware-centric, scattered CCTV, Matrix offers software-powered Video Surveillance System specifically designed for serious deployments. It seamlessly integrates multiple locations and offers live views, real-time alerts and analytics to multiple users.

No wonder, many progressive organizations including Schneider, Tata Motors, Samsung, GE, Airport Authority, Indian Railways, etc. have switched to Matrix.

- VMS, NVRs, IP Cameras
- 10,000 Locations
- 65,535 Cameras
- Analytics for Threat Detection
- Cognitive Response Engine
- Alerts and Notifications
- Open and Integrated Platform
- R&D and Manufacturing in India



Call: (+91) 1800 258 7747
Email: Inquiry@MatrixComsec.com
www.MatrixVideoSurveillance.com



Publisher

Shilpa Vinayak Kadam

Editor

Rajeev Iyer

CEO

Shekhar Dongre

Assistant Editor

Shweta Nanda

Marketing Team

Ladoji Pendurkar, Amol Powle,
Bhavin Shah, Bharat Shah, Vinod Surve, Hiren
Shah

Digital Marketing

Kailash P.

Print & Online Division

Arun P. Shinde, Nandan S. Moghe,
Dinesh S. Gawade, Ganesh B. Mahale

Circulation Executive

Jyoti Fegade, Satish Kadam, Amol Ranshur

Legal Advisor

Advocate Vijay S. Jadhav

Branch Offices (Zonal)

NORTH (Delhi & NCR regions)

Sandesh Jain : 09810837877 / 09871602777

SOUTH (Chennai & Coimbatore)

Y. V. Raghu : 09566141224

Bangalore

E Vikram : 09591488434

Vaman : 09686721340

Hyderabad

E Vikram : 09591488434

Kochi

Sanjeev Nair : 09846249568

EAST (Kolkata & Eastern regions)

Amol Powale - 09820488541

WEST (Maharashtra & Gujarat)

Pune

Kuldeep Kshirsagar - 09689403523

Nashik

Abhijit B. Joshi : 09890002333

Rajkot (Saurashtra)

Swapnil Bhatia: 09227909005



Head Office :

Divya Media Publications Pvt. Ltd.,

3rd Floor, Harmony Tower, N.S. Road,

Thane-400 602, Maharashtra

Tel: +91 22-25380574/75,

Telefax: +91-22-25418254

Email: shekhar@divyamediaonline.com

Website: www.isrmag.com

Printed & Published by Shilpa Vinayak Kadam
behalf of DIVYA MEDIA PUBLICATIONS PVT. LTD.,
Industrial Safety Review, Printed at Anitha Art
Printers, 29, Oasis Industrial Estate,
Next to Vakola Market, Santacruz (West),
Mumbai - 400055, Maharashtra.

CEO CORNER



Surviving the Covid-19 economic crisis

Coronavirus pandemic has turned the world upside down. In this uniquely challenging environment, businesses are trying to figure out how to ensure productivity while making sure the employees remain safe.

In these difficult times, there are companies that are innovating to tide over the crisis and finding a silver lining. From harnessing technology to stay

connected, upskilling the employees to innovating with product lines and solutions to tackle the ongoing health issues, the security and safety industry is also taking measures to stay afloat.

There is no doubt that challenging days lie ahead. Bringing the work and life back to normal will require significant efforts. Even the way we work and our workplace will never be the same again. Work from home is all set to become the new normal. Covid-19 may prove to be a major tipping point for the digital transformation of the workplace.

There are many lessons to be learnt from this crisis and every business needs to re-evaluate and re-consider business vision, redundancy and liquidity. However, most importantly they need to re-look at employee safety and must plan on how to get their workplaces ready for post COVID-19 world. Companies need to adapt and respond to the challenges of pandemics with careful planning.

CEO



MATRIX COSEC: PEOPLE MOBILITY MANAGEMENT SOLUTIONS

More Locations More Flexibility More Control

Traditionally in business, more locations has always meant lesser control. Not any more. Because there is hardly anything traditional about the futuristic COSEC range of Access Control and Time-Attendance solutions from Matrix. These technological workhorses perform seamlessly across multiple locations - removing all barriers of size, time and distance. They integrate biometrics with RFID Cards and are engineered to adapt to current and future organizational needs. Thus it is no surprise that Matrix COSEC has been chosen by progressive organizations like Adani, Coca-Cola, Cipla, Hero MotoCorp, Gold's Gym, Shriram Transport and Shapoorji Pallonji.

Functions

- Access Control for Enterprise
- Access Control for SMB and SOHO
- Time-Attendance
- Visitor Management
- Employee Self-service
- Cafeteria Management
- Contract Workers Management
- Job Processing and Costing
- Web-based Management
- Mobile-based Management
- SAP, ERP and Payroll Integration
- Best-in-Class Reporting and Analysis
- Centralized Administration, Control and Monitoring
- Flexible and Scalable

Features

- 10 to 1 Million Users
- 1 to 1,000 Locations
- 1 to 65,000 Entry Points
- 200+ Features
- 99 Functional Groups
- 200+ Reports and Charts
- Time, Role and Zone based Access
- Working Hours, Shifts and Holidays
- Late-In, Early-Out and Overtime Policies
- SMS and Email Notifications
- Palm Vein, Fingerprint, Face and RFID Cards



ACCESS CONTROL AND TIME-ATTENDANCE ENTERPRISE • SME • SMB • SOHO



On-Premise with
COSEC CENTRA



On Cloud with
COSEC VYOM

Available on:

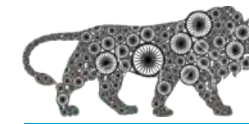


Call: (+91) 1800 258 7747

Email: Inquiry@MatrixComsec.com

www.MatrixAccessControl.com



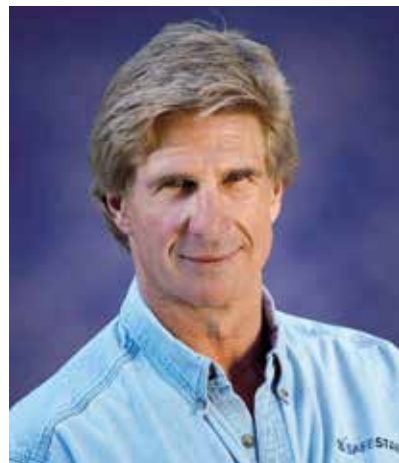


MADE IN INDIA PRODUCTS

COVER STORY



LARRY'S COLUMN



PARADIGM SHIFTS

Hello & welcome back to the "Paradigm Shifts" series.

Larry Wilson, CEO and Author SafeStart International

16

BUSINESS NEWS

20 Hikvision launches new generation of AcuSense products

24 ZKTeco Biometric Security Conference at Hyderabad

24 Videonetics' Intelligent VMS is now ONVIF Profile 'T' compliant

26 KARAM starts production of face shields amidst the Covid-19 pandemic

TECH TRENDS



PERSONAL PROTECTIVE EQUIPMENT SIGNS

A new range of focused, accurate, foresight-driven Photoluminescent Signages

Making Safety Safer....since 1984



Prolite Autoglo Limited
25, Singh Industrial Estate No 3, Ram Mandir Road,
Goregaon (W), Mumbai 400104, Maharashtra, INDIA.



+91-22-67868100/101



www.prolite.in



sales@prolite.in

CLICK ON COMPANY NAME TO VIEW ADVERTISEMENT PAGE

COMPANY NAME	PG. NO.
A	
AMBETRONICS ENGINEERS PVT. LTD.	29
B	
BFT AUTOMATION SYSTEMS PRIVATE LIMITED	9
C	
C.R.I. PUMPS PRIVATE LIMITED	7
F	
FIRE SAFETY DEVICES PVT. LTD.	21
FIREFLY FIRE PUMPS PVT. LTD.	23
G	
GALAXY EARTHING ELECTRODES (P) LTD.	31
GUNNEBO INDIA PVT. LTD.	INSIDE FORNT COVER
H	
HOCHIKI	INNER INSIDE FALSE COVER
K	
KRM CORPORATION	40

COMPANY NAME	PG. NO.
M	
MARVEL GLOVES INDUSTRIES	19
MATRIX SECURITY SOLUTIONS	1, 3
MIDAS SAFETY PRIVATE LIMITED	13
P	
PRAMA HIKVISION INDIA PVT. LTD.	FRONT COVER
PROLITE AUTOGLO LIMITED	5
R	
RMG POLYVINYL INDIA LTD.	25
RR KABEL LIMITED	BACK PAGE
S	
SAFESTART	17
SCRUM SYSTEM	27
V	
VICTOR IMPORTS	15
Z	
ZKTECO BIOMETRICS INDIA PVT LTD	INSIDE BACK COVER

SUBSCRIBE DIGITAL MAGAZINE on Health, Safety, Fire & Security Industry



- News
- Expert Opinions
- Technology Innovations
- Product Updates



India's leading monthly magazine on health | safety | fire | security industry

AT YOUR FINGERTIPS NOW !!!

SUBSCRIBE DIGITAL MAGAZINE TODAY !!!

www.isrmag.com



C.R.I. PUMPS
Pumping trust. Worldwide.

One Stop Pumping Solutions...

FIRE FIGHTING SOLUTIONS

- Airports and ports
- Fireworks Industries
- Commercial Complexes
- Petrochemical Industries
- Power Stations and Transformer Stations
- Gas Plants
- Godowns
- High Rise Buildings
- Marine Applications



C.R.I. PUMPS PRIVATE LIMITED

Regd. Office : 7/46-1, Keeranatham Road, Saravanampatty, Coimbatore - 641 035. Tamilnadu, INDIA.
Phone : +91-422-7117000, E-mail : bcsmtk@cripumps.com www.crigroups.com

Editorial Board



Mr. Farooq Abdullah
Managing Partner,
Marvel Gloves
Industries



Mr. Harsha Joshi
CEO,
Prolite Autoglo Limited



Mr. Larry Wilson
Author - CEO,
SafeStart



Mr. T. P. Singh
Director - S&M,
FLIR Systems India Pvt.
Ltd.



Mr. Nishith Dand
Director,
Sure Safety India Pvt.
Ltd.



Mr. Deepak Kapoor
Managing Director,
FAAC India Pvt.Ltd.



Mr. Rohit Harjani,
Country Manager,
Indian Sub Continent,
Hochiki Europe (UK)
Ltd. -
India Branch Office



Mr. Johnson Mathew
Vice President -
Fire Products
Gunnebo India Pvt. Ltd.



**Mr. P.K. Balasubbra-
manian**
President, VBS
Corporate Support



Mr. Kiron Kunte
Director,
Norik Konsult



Mr. R. R. Nair
Director,
Safety & Health
Information Bureau



Mr. Jiten Mohapatra
General Manager - India
Zkteco Biometrics India
Pvt. Ltd.

Editorial Index

A	
AMBETRONICS	36
AQUILA	26
F	
FRONIUS	28
H	
HIKVISION	20, 22, 34, 39
K	
KARAM INDUSTRIES	11, 26
M	
MARVEL GLOVES INDUSTRIES	37
MATRIX	30
P	
PROLITE AUTOGLO	38
R	
RR KABEL	14
S	
SAFESTART INTERNATIONAL	16
SAFETY AND HEALTH INFORMATION	
BUREAU	32
SCHMERSAL INDIA	12
T	
TELGUARD	20
V	
VIDEONETICS	24
Z	
ZKTECO BIOMETRICS	11, 24

Contact :

For editorial contribution
E-mail: shweta@divyamediaonline.com

For advertising material
E-mail: advt@divyamediaonline.com

For accounts
E-mail: accounts@divyamediaonline.com

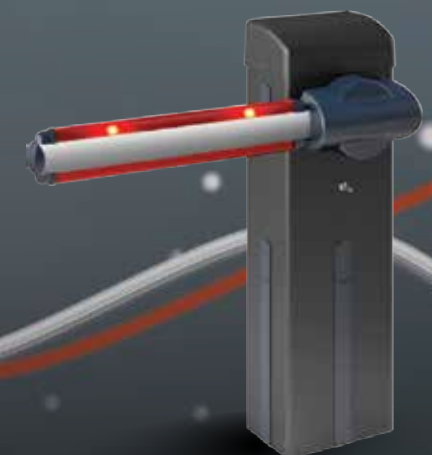
For online advertising
E-mail: ganesh@divyamediaonline.com



Barriers The power of total control



A high performing range for perfect access products. The exclusive U-Link technology can be used to manage and maintain several entry points at the same time, both locally and remotely, ensuring the full functionality of accesses in both public and private spaces. Equipped with different accessories, Bft barriers respond to different needs and adapt to every situation.



Be ahead

BFT Automation Systems Private Limited - Plot no. 6 , Shed no. 1, IDA Bollaram - Hyderabad- 502325
Email Id: info@bftindia.com - Mobile no: 8897141999/9100122902

Fighting the COVID 19 battle

As Covid-19 rattles economies and disrupts businesses across industries, companies are learning to deal with the crisis and trying to figure out what will be the overall impact. The main concern for businesses now is ensuring employee protection, while maintaining business continuity and minimum impact to customer service.

We, at Industrial Safety Review, spoke to some companies in the safety and security segment that are innovating to tide over the crisis. These front-runners tell us how they are staying productive and adapting and innovating to meet the requirements arising out of the global pandemic. They elaborate on key lessons companies can learn from the crisis and what changes in terms of business and technology can we expect in the near future. Excerpts:



Sandeep Arora,
National Sales Head,
KARAM Industries

In the wake of the recent outbreak of the COVID-19, KARAM is standing by all its stakeholders. Through various modes of communication, we are assuring our customers and stakeholders about our responses to this critical situation. Simultaneously, we are communicating with our customers regularly to strengthen our relationships.

Undoubtedly, all business establish-

Ramping up production capabilities to meet PPE needs in healthcare



ments, have been affected by the coronavirus pandemic. That said, we see a huge increase in demand of PPE. At a time of great human need, we have rapidly progressed our production capabilities to meet the needs of our healthcare sector. Along with chemical splash goggles, we have now added medical face shield in our product range.

Through these initiatives, KARAM aims to expand its healthcare PPE portfolio looking at the current scenario. We are trying our best to support the government and the rising needs of PPE.

Ensuring productivity with employee well-being

Most of our team members are working

from home while only some of them in factories are going in to work. We are ensuring the well-being of our employees at the manufacturing units by stringently following social distancing. Every employee is maintaining proximity of 1-2 metres from their fellow employee. Additionally, every worker is wearing safety equipment while working, and the premises is sanitized daily.

The Covid-19 crisis is an opportunity for companies to show how resilient and well prepared they are to manage risks and adapt to new circumstances. Facing unprecedented tensions, organizations must question themselves about their purpose and how they operate. This crisis should be seen as an opportunity to rethink corporate responsibility. **ISR**

Jiten Mohapatra,
VP-India & Marketing Manager,
ZKTeco Biometrics India Pvt. Ltd.



'Innovating to tackle the ongoing public health issue with Touchless Biometrics Solutions'

almost nil.

It is an undeniable fact that Covid 19 Pandemic will have a significant impact on the Indian Economy. Most of the businesses are not being able to function to the fullest also based on the fact that the complete lockdown imposed by the government of India as a preventive measure to combat the virus has reduced the consumer buying capacity to

However, even in this dire situation business organizations have found a way and adopted strategies such as work from home, managing shifts, limited employees, etc., to maintain the flow of business functions. With respect to ZKTeco, we have initiated a new product segment to tackle the ongoing public health issue with Touchless Biometrics Solutions by promoting public safety and hygiene through contactless user-identification coupled with body temperature detection and masked-facial recognition, thereby reducing the possibilities of acquiring germs in public areas.

As a responsible organization of the nation, ZKTeco India is committed to exterminate this global threat by providing its support to the society by any means necessary. ZKTeco has been creating social awareness about the virus as well as the means to safeguard us from the infection in its social media platforms. ZKTeco considers the well-being and safety of its employees as a top priority and they are given the option to work from home safely. Furthermore, ZKTeco's revolutionary online based time attendance platform, easy TimePro APP, helps the employees to provide their attendance even from distant locations conveniently. Business organizations



can adopt to easy TimePro system and can still have maximum employee productivity at this global crisis without compromising employee safety.

Harnessing digital technologies to stay connected

ZKTeco has taken considerable efforts to improve customer experience and maintains a smooth relationship with its clients via interactive and

informative webinars, online client meets as well as by giving regular updates about our latest products and solutions. In addition, we have been conducting various Online Certification Programs on biometric products and security solutions with the intention of creating cognizance about the security industry. We also plan to conduct virtual events to offer a dynamic experience to our clients and customers.

Public organizations as well as business enterprises need to enforce preventive measures in their premises to avoid any such events in the future. The business organizations should make sure that the employees are given enough guidance about personal hygiene practices and the means to implement them during the office hours, thereby creating a healthy eco-system that is good for the well-being of employees as well as for the society. **ISR**



Ganesh Jivani,
Managing Director,
Matrix Comsec

'Every crisis is an opportunity in disguise'

the lockdowns.

Today, security has become even more critical because people are staying at home and cannot physically visit their workplace or office. While Indian security professionals are working day and night to protect people and assets, customers are increasing depending on new-generation security solutions and equipment and solutions even during the lockdown.

Most new-generation security equipment offers integration, remote administration, monitoring and real-time alerts and notifications. So, those organizations who have already invested in cutting-edge security technology are definitely better off than those who are still relying on the traditional security equipment.

Coming to Matrix's telecom business, as more people work remotely, more communication and collaboration tools will be essential for the exchange of information. Scattered people need more communication and collaboration tools. Matrix offers collaborative telecom solutions for organizations and individuals on a wide range of platforms and devices including desk phones, softphones on PC, mobile apps, etc.

Lessons learned and future directions

Every crisis is an opportunity in disguise. We have prepared a list of lessons and improvements we plan to start working on immediately. First, create infrastructure and methods for WFH and remote working. This will also strengthen our culture of accountability and meritocracy. Our managers would also learn to measure outcome (productivity) subjectively. Next, we also count on developing capability to respond to such a crisis in future and learn to minimize the impact of such disruptions on our customers and our business. Another very exciting opportunity in sales and marketing by establishing innovative methods and tools and reskilling our people to continue driving business without relying on physical, face-to-face meetings and presentations. We are confident this will also reduce our costs. Finally, we are using this situation to identify and attack inefficiency in our organization.

Overall, this pandemic has given us the time to pause and reflect on our SWOT and strategies. We expect sharper business strategies and enhanced productivity (even while working remotely). We are pushing employees and partners to improve their competence and sharpen their skills. **ISR**

These are testing times and for us, our focus has always been on what's most important – our customers and employees. Of course, our offices are closed to comply with the government rules and regulations. However, our dedicated teams work from home to support our customers 24x7 even during the entire period of lockdown. I am proud to say we have not missed or delayed a single support call during the entire lockdown.

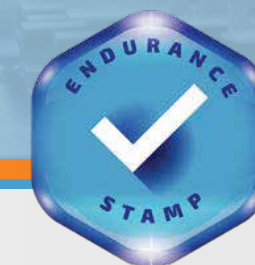
Matrix has international businesses in 50+ countries with most of our customers being multi-location enterprises and SME depending on Matrix solutions for their operations. All our technical support tools including CRM are accessible remotely and all our engineers are able to continue supporting our customers. We are also delivering software products and updates during



MADE TO LAST!



ARC SAFE THERMPRO

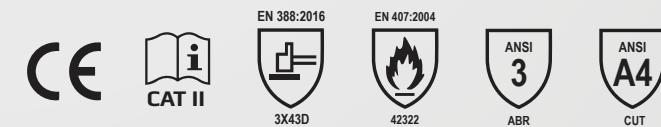


FEATURES

- ✓ ASTM F2992 Cut score of A4 and EN Cut 5
- ✓ Arc Flash rating of 8.6 cal/cm2
- ✓ Excellent dry and wet grip
- ✓ Good abrasion resistance
- ✓ Excellent oil, grease, glue and chemical resistance
- ✓ Dexterity, touch, elasticity & comfort similar to Natural Rubber
- ✓ Knuckle coated version available

APPLICATIONS

- ✓ Electric & Gas Utilities
- ✓ Resource Manufacturing
- ✓ Glass Handling
- ✓ Canning
- ✓ Mining
- ✓ Industrial
- ✓ Sheet Metal Industry
- ✓ Oil Processing & Refining
- ✓ Bottling
- ✓ Construction
- ✓ Automotive
- ✓ HVAC



Midas Safety Private Limited,
B-45, 2nd Cross, 4th Main Road,
SIPCOT Industrial Park, Irungattukottai,
Kanchipuram District - 602 117

Mail : customercare.in@midassafety.com
Website : in.midas-safety.com

'Big opportunity for the security industry to offer the innovative technology solutions'

Mr. Ashish P. Dhakan,
MD & CEO,
Prama Hikvision India Pvt. Ltd.

The impact of the pandemic on overall security business scenario is being felt by the security industry ecosystem, it is yet to be assessed in totality. We have to remember that we are in this together. We need to think, innovate and fight collectively to win against the pandemic. We need to work on a fool-proof business continuity plan while following the government advisory. It is an epoch-making moment for the medical science fraternity to offer a curative medicine to the humanity. At the same time, it is also a big moment for the security industry to offer the innovative technology solutions that will help the humanity to stay safe and secure in this crisis.

In the ongoing pandemic crisis, Prama Hikvision is offering innovative solutions like Temperature Screening Thermographic Cameras, Door Frame Metal Detector (DFMD) with Ther-

mal Screening Solution and Face Recognition Terminal with Temperature Screening. These innovative solutions are helpful to manage large number of employees and people across the verticals.

Ensuring business continuity and customer service

The key strategy is resilience at every phase as we are flattening the curve and breaking the chain. We are quite sure that we shall overcome the odds and win over the pandemic. First and foremost, the current state of the security industry requires us to be resilient to the current situation and to be vigilant in our response to the dynamics that make up our daily operations. We need to implement the right strategies, tactics and protocols to ensure the business continuity and well-being of our clients, employees and community needs.

We, at Prama Hikvision, had announced 'Work From Home' (WFH) policy for all our employees as per the government guidelines with immediate effect. Our focus continues to be minimizing the supply chain disruptions. We are ensuring by all means that despite the ongoing situation, supply chain disruptions and there-

fore prolonged lead time are kept to a minimal.

We at Prama Hikvision are striving hard to enhance the customer experience at every touch point. Our customer centric approach has always opened new opportunities and we are sure this crisis will be no exception. We are ensuring that the customers are attended by our representatives of the respective departments and their queries are resolved in a shortest possible time.

Digital is a business imperative

We need to be alert and resilient in planning and preparedness during the ongoing crisis and post pandemic period. We need to integrate all the core functions of the company onto the digital platform. The digital platforms will ensure the business continuity during the pandemic situation or any other crisis. The key priority should be the reassessment of business impact and rethinking the possible scenarios. This can be best done through reliance on best practices, integrated risk management, and efficient communication at every level. The key to success is having a clear communication and shared expectations with all the stakeholders. **ISR**



VICTOR
IMPORTS
Caring for your Hands

NITROCHEM-15

CHEMICAL RESISTANT GLOVES

- Anti Bacterial
- Free of Natural Rubber Proteins
- Non Slip Grip
- Chemical Resistant Gloves
- Cotton Flock-lined

EN374-3 EN388 EN374-2
AJKL 4102

CE 0120

Building No. 3, Krishna Niwas, Khetwadi 9th Lane, Mumbai - 400004, Maharashtra, India.
T: 022 23851299 / 66638666 / 66638111 | E: gloves@rtcogl.in | W: www.victorimports.in

PARADIGM SHIFTS

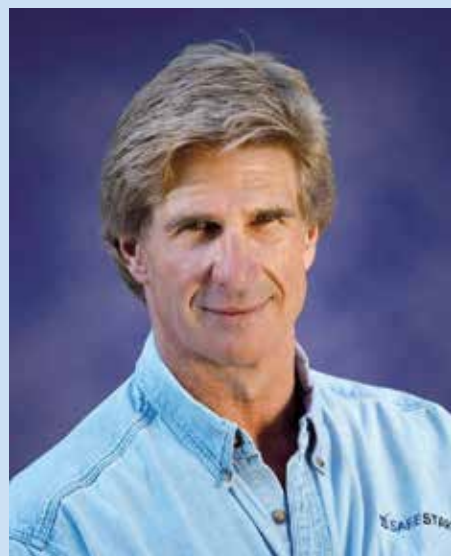


Hello and welcome back to the "Paradigm Shifts" series.

Last issue, we discussed whether it was hazards or is it hazardous energy? The conclusion (although fairly straightforward) is that it's really hazardous or potentially hazardous energy... which can move. People can also move, which means that eyes and mind on task are very important, which means that human error is important – primary in fact – whenever people are moving or things around them are moving.

So, if we acknowledge that human error is important, the next question is "who". Whose error caused the incident? Is it always the other person or is it mostly us? And what about when there's no human error, just mechanical or electrical failure?

Well, one thing we do know is that no one is ever trying to get hurt or cause a lot of accidental damage. Nobody ever plans to do this, which means that something unexpected must have happened. Once something unexpected happens, it's like the first "domino" falling. Then, depending on how many other dominos are lined up, that unexpected event will start a chain reaction. Once the chain reaction starts, and the dominoes start falling – exactly where you end on the (old) risk pyramid is usually determined by the amount of hazardous energy and luck (landing on your feet is usually better than landing on your head and a one-meter fall is usually better than a 10-meter fall).



Larry Wilson, CEO and Author SafeStart International

THE 3 MAIN SOURCES OF UNEXPECTED EVENTS

Essentially there are only 3 sources of unexpected events: You do something unexpectedly; the other person does something unexpectedly or the equipment does something unexpectedly. (See figure #1)

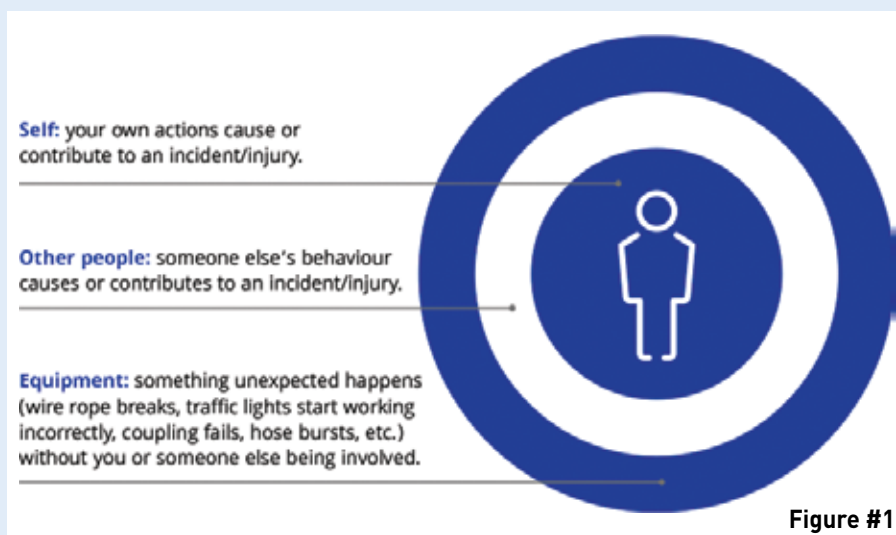


Figure #1

GET A NEW AND DIFFERENT PERSPECTIVE ON SERIOUS INJURY CAUSATION FROM SAFESTART'S BRAND NEW PROJECT,

PARADIGM SHIFTS



Written by SafeStart Author and Safety Thought-Leader, Larry Wilson, this is a series of 12 provocative short articles designed to provide additional perspective or perhaps, to even change your mind about the way you think about industrial safety, accidental injury causation and the role it also plays on your overall production, quality and customer relations.

AT A MOMENT WHERE WE HAVE TO **RETHINK OUR VALUES AND CREATE NEW WAYS TO TRAIN OUR PEOPLE** MORE THAN EVER, NOW IS THE PERFECT TIME TO **CHANGE SAFETY PARADIGMS!**

Contact us at asia@ssi.safestart.com for more information on the SafeStart programme and also access all free content we have available for you:



All you need to know about how the human factors affect your safety and performance and many free resources you can use to train your team:



LISTEN TO THE PODCAST · Tune in with the author of SafeStart, Larry Wilson, and listen to the stories behind each chapter in his new book, Defenseless Moments: a different perspective on human error.



PARADIGM SHIFTS ARTICLES · Read the series, change the way you think about safety and join the discussion! Download all articles for free in our website!



READ THE BOOK · The book Defenseless Moments is based on the Paradigm Shifts series, that has been published in safety magazines all over the world. Buy your copy from Amazon!



<https://asia.safestart.com> · asia@ssi.safestart.com

Over the last 20 years, SafeStart has helped thousands of companies in over sixty countries move beyond compliance and beyond the workplace to improve employee engagement and business performance. **SafeStart creates a shift in mindset that has the power to keep people safe at work, at home and on the road.**

Which of these three sources do you think is the highest or most important? If we asked these same questions to all the people you work with at your company, what would they say?

Well, before getting into the percentages for each category, let's take a moment to think about what's actually happened to us in terms of injuries and near misses. The reason for this is that when you look at reports, the information can be "filtered" right from the beginning. We really don't know whether the person fell asleep at the wheel or whether a dog, deer or some other form of wildlife ran out in front of them, and we don't know if what they told the police was the truth (some people don't). But we certainly know whether or not we fell asleep at the wheel.

So, how many serious injuries have you had? (Broken bones, 3rd degree burns, serious concussions, etc.) Next, how many minor injuries like sprains and strains, stitches, mild concussions, etc. Have you sustained? And then, how many cuts, bruises, bumps and

scrapes have you had? How do you compare with most people (see figure #2).

Obviously, when you bang your shin on the coffee table it's unlikely that the table did anything unexpectedly. But what about all the other stuff? Well, now that you've thought a bit about your injuries to date, how many of them were caused by the equipment doing something unexpectedly? Note: if you have 100 people in the room you normally only get one or two hands up for this question. When you ask about the other guy doing something unexpectedly be sure to exclude contact sports where the other guy is trying to hurt you.

Again, with 100 people you usually get 10-15 hands up but rarely does anyone have more than one example. And finally, what's left are all the injuries in the self-area. For most people over 95% of the injuries they have sustained were in the "self-area". Although most people "freely" admit that it's more like 97-99%.

Over 3 million people have been through this exercise at thousands

and thousands of workplaces. And in terms of paradigm shifts, it's probably the most powerful or one of the most powerful ones. What most workers/people think (or thought before going through this exercise) is that the equipment doing something unexpectedly or the other guy doing something unexpectedly will be much higher than the self-area. Even the people who have already come to the realization that the self-area is probably the highest are really surprised at just how high it is: most people (over 80%) have never been seriously hurt because the equipment or somebody else did something unexpectedly. In other words, 100% of their serious injuries were in the self-area.

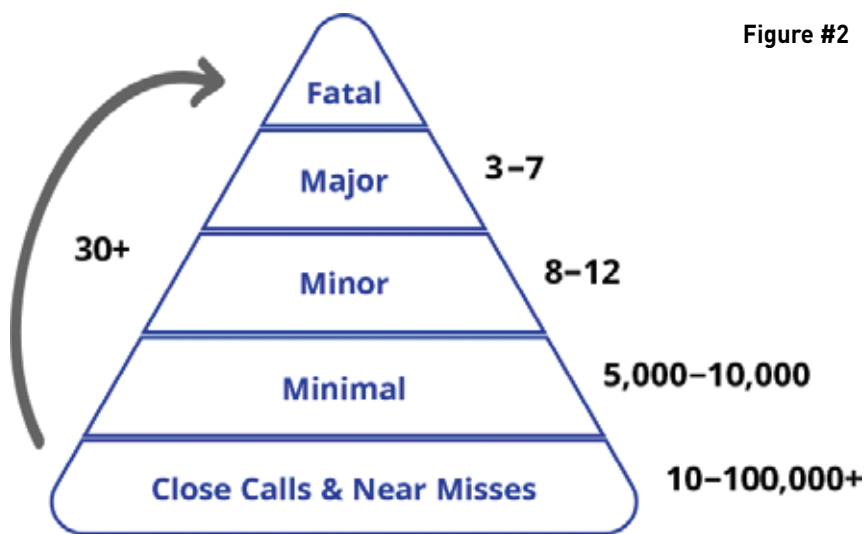
This exercise, where you get everyone to build their own personal risk pyramid and then think about each of the 3 sources, as you can imagine, is a real "eye opener" for people who previously thought it was mostly the equipment or the other guy.

So, we have met the enemy, and the enemy is us. But this is actually very empowering: because if it always was the equipment or the other guy doing something unexpectedly then we would be powerless or close to powerless in terms of being able to do something about it.

But if it's us, then we can.

For more information, www.uk.safestart.com/paradigm-shifts

NEXT ISSUE
We will explore the irony or the counter-intuitive nature of risk assessment.



Are you looking for The better Ear Protection?

Your search is over



FOR MORE DETAILS / ENQUIRY PLEASE CONTACT
Marvel Gloves Industries

Manufacturers, Exporters & Importers of Gloves & PPEs
187/188, 2nd Floor, Ashoka Shopping Centre, G.T. Hospital Complex, L.T. Marg, Mumbai 400 001 INDIA
Tel.: +91 22 22659475 / 22659480 | Phone No: 9987402000 / 7400449905 / 9619453278 / 7400447711
Email: sales@marvelgloves.com | Website: www.marvelgloves.com



DEALERSHIP ENQUIRIES SOLICITED

Follow us on: marvelgloves

Hikvision launches new generation of AcuSense products

Hikvision recently announced the launch of a new generation of its signature AcuSense products, with significant updates.

The latest Hikvision AcuSense devices are engineered with an upgraded deep learning algorithm, which analyzes live video streams and labels them as “human,” “vehicle,” or “other events.” Those labeled as human and vehicle will trigger alarms for security staff, while other events such as rain drops, animals, or the movement of foliage, for example, will be drastically disregarded. The result is a striking reduction in false alarms – now with an accuracy approaching 98%.

Taking users’ habits into full consideration, Hikvision designed AcuSense products to integrate human and vehicle classifications with motion detection. More specifically, when motion is detected, the system analyzes



whether or not it is associated with a human or a vehicle, and whether an alarm should be triggered.

Frank Zhang, President of International Product and Solution Center at Hikvision said, “AcuSense technology enables security personnel to focus on human and vehicle events rather than insignificant objects, so they can act more efficiently which helps

save time and costs, while end users can get full control of their security system anytime, from anywhere.”

When real-time deterrence is needed, Hikvision also offers camera models with a flashing light and auditory warning. As soon as an alarm is triggered, the built-in light flashes. Simultaneously, security personnel can communicate with the per-

son who triggered the alarm to confirm their authorization, thanks to the built-in speaker and microphone in the camera. Of note, the latest AcuSense cameras even support customized audio tracks, which can be pre-recorded to suit various environments.

The latest AcuSense camera lenses are equipped with an aperture reaching up to F1.4. This technology allows more light to enter the lens, for optimized image brightness, and better performance in low-light environments.

Compared with previous AcuSense cameras, this new generation extends target classification distances from 10, 15, or 22 meters to 20, 25, or 30 meters, depending on the model.

Customers can choose from 2 MP, 4 MP, or 4K resolutions, as well as dome, turret and bullet housings to suit their specific installation requirements.

Telguard receives NYC certificate of approval for fire alarm communicator

Telguard recently announced that its cellular fire alarm communicators have been issued a Certificate of Approval, #6316. This means Fire & Life Safety dealers in New York City are now able to use Telguard’s premier cellular fire communicator, the TG-

7FS LTE.

New York City has strict regulations on fire communicators that can be used, and manufacturers must obtain a Certificate of Approval for fire systems dealers to be able to specify a brand like Telguard. The Certificate of

Approval #6316 gives New York City fire integrators the ability to specify the TG-7FS LTE in their system designs.

The TG-7FS is a universal cellular communicator, meaning it works with virtually every fire alarm control panel. Using LTE cel-





WE HAVE GOT YOU COVERED!

From fuel fire to metal fire, from fire fighting chemicals to fire fighting devices, we are the experts when it comes to anything involving fire safety. We are Fire Safety Devices Pvt. Ltd. We are devoted to keep your workplace safe from all types of fire hazards.

FOAM CONCENTRATES

- ▶ Aqueous Film Forming Foams (AFFF)
- ▶ Fluoro Protein Foams (FP)
- ▶ Film Forming Fluoro Protein Foams (FFFP)
- ▶ Alcohol Resistant Aqueous Film Forming Foams (AR/AFFF)
- ▶ Alcohol Resistant Film Forming Fluoro Protein Foams (AR/FFFP)
- ▶ Class A Foams
- ▶ Protein Foams & Hydrolysates
- ▶ Fluorine Free Foams
- ▶ HAZMAT Foams

EQUIPMENTS

- ▶ Bladder Tanks
- ▶ Foam Chambers / Pourers
- ▶ Hand Line Nozzles
- ▶ Water Mist Backpack System
- ▶ Fire Extinguishers - Dry Powders
- ▶ Fire Extinguishers - Clean Agents
- ▶ Fire Extinguishers - Carbon Dioxide
- ▶ Fire Extinguishers - Wet Chemical



DRY CHEMICAL POWDERS

- ▶ BC Powders Sodium Bicarbonate Based
- ▶ BC Powders Potassium Bicarbonate Based
- ▶ ABC Powders Mono Ammonium Phosphate Based
- ▶ Class D Powders
- ▶ FireChem Force for High Risk Class B&C Fires






MMD
APPROVED

IS-4989 (Part-II)

www.fcisd.com | info@fcisd.com | Help line Phone 24 Hours: +91-11-32537657

lular networks, the TG-7FS transmits alarm signals from the fire panel to the designated monitoring station. The unit meets UL 864 requirements and is compliant with NFPA 72 for primary or backup communications for commercial fire alarm systems. By using the TG-7FS,

accounts can go from two to one dedicated landline, which will save them money. Telguard collaborated with Carlos Santiago, owner of New York Protection Controls to obtain the Certificate of Approval. "Central stations need to know about this Certificate of Approval so

they can work with fire and life safety integrators and specify cellular communicators like Telguard in their system designs," said Santiago. "Dealers and integrators can choose from either AT&T or Verizon models—which ever carrier works best for them in their locale."

"Telguard has been a go-to cellular communicator for authority having jurisdictions (AHJs) and fire marshals across the country for years," said Telguard President George Brody. "We're thrilled to have New York City's Certificate of Approval."

Prama Hikvision premieres its latest tech innovations at FSIE 2020

Prama Hikvision recently participated in the 4th Edition of the Fire & Security India Expo (FSIE) 2020, which was held between 27 -29 February, 2020 at IEML, Grater Noida. The FSIE also hosted the FIST Awards ceremony on 27th February at Crowne Plaza Hotel. Prama Hikvision bagged the FIST Award in Product of the Year home Protection System category.

Commenting on the FSIE participation and FIST Award win, Ashish P. Dhakan, MD and CEO, Prama Hikvision India Pvt. Ltd., said, "We are happy to showcase the latest products and innovative technologies, including Artificial Intelligence (AI), AI Cloud, Big Data and IoT. We are glad to have won the FIST Award (Product of the Year – In home Protection System), it reaffirms our resolve to present latest technologies, products and solutions. I wish FSAI and FIST Award will continue to

promote the spirit of excellence among the security professionals and end-users community."

He further added, "We are confident that all the latest products and cutting-edge AI technology applications will enhance the end-users' engagement with latest technologies. We had displayed ColorVu and AcuSense Camera Series along with the latest offerings in Access Control, Video Door Phone, Intrusion Alarm, Perimeter Security."

At the event, Hikvision showcased the latest and most advanced technological innovations with AI Technologies, the signature DeepinView Series IP Cameras and DeepinMind Series NVRs. It also displayed the AI based applications for Face Recognition, People Tracking and Perimeter Protection. Hikvision had exhibited Central Monitoring Solution, Integrated Solutions, PanoVu Camera, Access Control Solutions, Face Recognition Terminal, Swing Barrier, Video Intercom Solutions, Intrusion System, Under Vehicle Surveillance system (UVSS), ColorVu Camera, AcuSense Camera, Intelligent Traffic Solutions, Mobile and Portable Solutions and Power, Petroleum, Oil & Gas (PPOG) solutions, etc.

Pankaj Dharkar, International Pres-



ident, FSAI along with Sandeep Goel Chairman, BIG3 Conferences, FSAI, hosted a thought provoking BIG3 Seminars spanning over three days. Prama Hikvision had participated in a panel discussion on 'Safety Systems at Large Assembly Spaces – Multiplexes, Malls, Airports, Convention Centers, Expos, Halls & Alike' on 28th February. The panel discussion was moderated by Architect Anurag Bajpai, Head- Technical, Greentree global. Mr. Ashish Gujarathi, AVP, Non-CCTV Products, Prama Hikvision India Pvt. Ltd. shared the insight on how advanced AI enabled security solutions can secure the large assembly places.

FIST awards are initiated by Fire & Security Association of India (FSAI) and powered by Prama Hikvision. The awards recognize the extraordinary contribution of End-users, Government Organizations, Original Equipment Manufacturers and individuals in various categories.

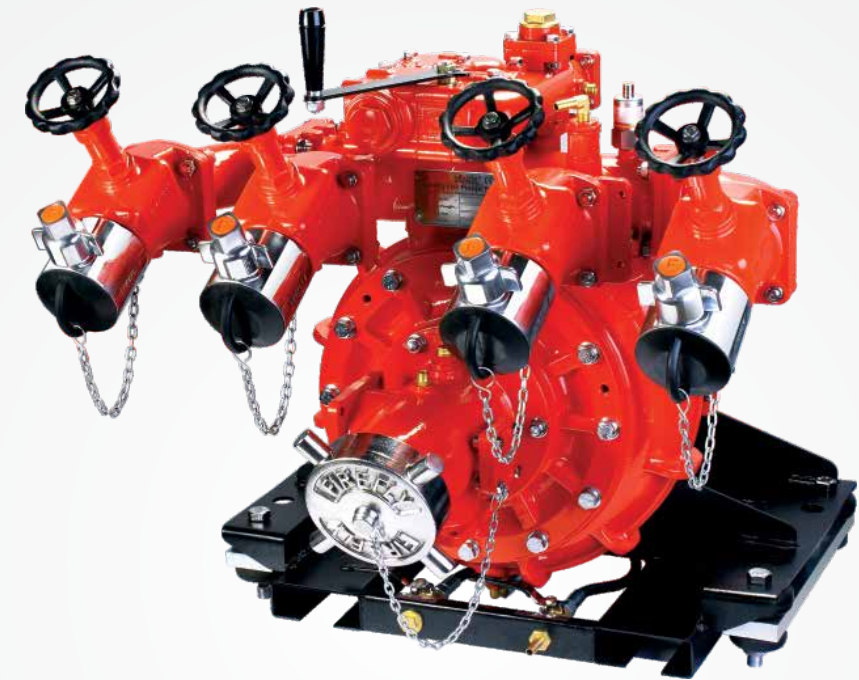
For more information, www.hikvisionindia.com



When there is no scope for error
Get **confidence** from



Pumps for Fire Trucks



The all new **ENDURA** series



Fastest Growing Brand

More than 5000 installations worldwide

Pump ranges from 1000 lit/min to 6000 lit/min

FIREFLY FIRE PUMPS PVT. LTD. - INDIA



ZKTeco Biometric Security Conference at Hyderabad

ZKTeco India organized Biometric Security Conference 2020 with a fascinating theme focusing on “The Futuristic Trends in Biometrics & Security Solutions” in Hyderabad on 28th February, 2020. More than 80 industrial participants joined for this scientific meet.

The event represented the upper end of technology spectrum in biometrics & security industry., ZKTeco showcased its latest product lines including Time Attendance, Access Control, Smart Locks, Entrance Control, Security Inspection, Visible Light Products with live demonstration & comprehensive briefing on products as well as software solutions



such as ZKBioSecurity, “All-in-One Security Solution”, easy TimePro with upgraded features, Safe School Solution, Easy Cafeteria Solution, etc. The conference attendees found keen interest in the new software solutions specially in Safe School Solution with real-time student location tracking feature and Easy Cafeteria Solution

with mobile app and they also gave positive feedbacks about ZKBioSecurity’s multi-module functionality for Time Attendance, Entrance Control, Elevator Control, Video Surveillance, Guard Patrol, Parking Management etc. in a single platform. The event was indeed found to be an interactive one, where participants gained insights about the



major drivers and opportunities in biometrics as well as security industry in the upcoming years and they were also encouraged to involve in comprehensive discussions, scientific panels, etc.

Videonetics’ Intelligent VMS is now ONVIF Profile ‘T’ compliant

Videonetics recently announced that its Intelligent VMS is now ONVIF Profile ‘T’ Compliant, that supports video streaming features such as the use of H.264 and H.265 encoding formats, imaging settings, and alarm events such as motion and tampering detection. These encoding formats ensure high compression efficiency which results in less disk storage space and less bandwidth usage for streaming, reducing overall costs of system ownership.

Moreover, the new standard supports onscreen display, PTZ configuration, motion region configuration (analytics for a specific area of an image), digital inputs and relay outputs, and bidirectional audio for conformant devices. Videonetics Intelligent Video Management Software is also compliant to ON-

VIF Profile S & G.

On this achievement, **Tuhin Bose, VP & CTO, Videonetics** expressed, “Receiving ONVIF Profile T compliance is a benchmark for us. The new standard makes our Intelligent VMS future-ready to efficiently manage streaming of the most advanced HD and 4K cameras to keep the highest video surveillance standards. Videonetics is committed to continue adopting open standards for better interoperability and openness.”

Having acclaimed No 1 position as VMS provider in India, Videonetics is also ranked amongst top 5 VMS providers in Asia market.



Videonetics Intelligent VMS is based on a unified, monolithic architectural framework integrated with Intelligent Video Analytics applications. The underlying technology of the VMS is agnostic to any Operating System (Windows, Linux, Unix, Mac OS, etc.), database, browser inter-

face etc., and follows the principle of true open architecture. Highly adaptable to customers’ existing workflow and diverse environments, the software is also extremely simple to use and investigation friendly. Hence, they do not need much training, and can interact with the system using a very intuitive interface with minimum number of clicks.



SAFEVOLT

Synthetic Mats for Electrical Purpose

HIGH VOLTAGE - INSULATING MAT

AS PER IS 15652 : 2006

Total Safety from Electrical Shocks

Use is mandatory as per Central Electrical Authority & Indian Electricity Rules.

Replace Outdated Rubber Mats

The “SAFEVOLT” Synthetic Mat - Confirming to IS: 15652 : 2006 has superseded the rubber mats with IS: 5424 (old Std.) As per Govt. Of India Gazetter notification No.- S.O. 2086 dt. 17th July, 2007

- High Voltage insulating mats confirming to new specification IS:15652:2006 have excellent electrical insulation & mechanical strength.
- Pastable type, Permanently fixed, smooth Trolley movement, Moisture Proof, Fire Retardant, no adverse effect of Acids, Alkalies and Transformer Oil.
- Recommended for safety of workers involved Electricity Generation, Transmission, Distribution and working on upto AC 66 KV & DC 240 V installations in all kind of sub-stations operating HT, LT switch gears, control panels, transformer room, battery room, generator rooms and bus bar panels etc.
- CPRI tested and certified

Specified under CPWD General specification for Electrical works Part-IV Sub-Stations 2007

RMG POLYVINYL INDIA LIMITED

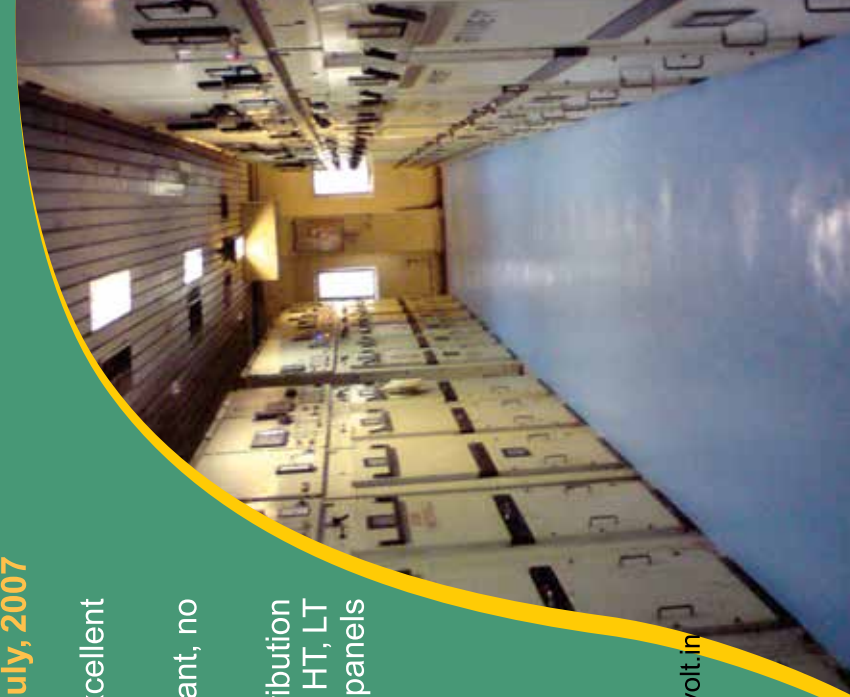
UG-SR-4, Ansal Plaza, Vaishali, Ghaziabad (U.P.) 201010, **PH** - 0120 - 4284802 - 06, **Extn.** 333 **Mobile** - +91 - 7838195579, **Fax** - +91 - 11 - 66173679, **Email** - doxam@rmgpoly.com, **Website** - www.safevolt.in

Dealers Enquiry Solicited

IS : 15652



CM/L : 3016636



Aquila announces gloves to address danger concerns in mining

Aquila has announced a range of gloves designed to address personal injury and danger concerns in mining. The NFU600S meets the general-purpose needs of mining workers for an enhanced grip protective glove that is both comfortable to wear over a long shift and low cost to purchase.

Aquila NFU600S gloves feature a 13-gauge nylon liner in a fine knit outer palm dipped in sandy nitrile. The user experience is expected to include good grip, especially of slippery

oily parts, coupled to a high degree of flexibility and durability with optimum dexterity in handling small items. The foam nitrile palm coat provides liquid resistance while leaving the remainder of the glove to breathe comfortably.

The NFU600S is part of an Aquila mining-oriented offering which also includes a wide range of impact protection gloves – plus cut resistance gloves where sharp object protection is required.

www.aquilaglove.com



KARAM starts production of face shields amidst the Covid-19 pandemic

Amidst the shortage of PPE equipment during the global pandemic, KARAM, India's leading Personal Protective Equipment (PPE) manufacturing company has started manufacturing medical face shields to offer protection to healthcare workers treating Covid-19 patients. The company has been manufacturing around 10,000 face shields on a daily basis and is looking at ramping up the production in the days to come.

This is the company's second initiative to provide support to the healthcare workers through safety products amid the ongoing situation. Earlier this month, they had partnered with the Government of India to manufacture

protective goggles for doctors and the police workforce across the country. Till date, KARAM has manufactured around 4.5 lakhs goggles that have been distributed across the stakeholders.

Commenting on the announcement, Sandeep Aroora, National Sales Head, KARAM Industries said, "We are currently facing an acute shortage of PPE equipment for healthcare workers who are risking their lives for the country. While several companies are trying to make these products, getting regulatory approvals continues to be a challenge. Being a PPE manufacturer, we use authentic materials for each of our PPE products, including goggles & face



shields and ensure that the entire product range meets the global quality standard. As a purpose driven organisation, we will continue to lend support in every way possible and help overcome this battle."

Through these initiatives, KARAM Industries that manufactures all PPE from Head to Toe like safety helmets, face shields, safety

shoes, full body harnesses, other fall protection equipment and eyewear aims to expand its healthcare PPE product portfolio looking at the current scenario. Moreover, the company is also looking at further expanding its offering and providing the entire safety kits to fight the pandemic.

KARAM is ensuring the well-being of its employees at the manufacturing units by stringently following social distancing. Every employee is maintaining a proximity of 1-2 metres from their fellow employee. Additionally, every worker is wearing safety equipment while working at all times and every corner of the unit and premise is sanitised on daily basis.

Pass your safety audits with flying colors!



Safety training is an important aspect for the Safety audits conducted during OHSAS18001, ISO14001, GMP FDA, PESO certification. However contract workers safety training is always a weak link during these audits. STK, which is a Safety Training Kiosk helps automating the safety training process and creates a strong audit trail with the photograph & fingerprint (biometric) of the person being trained.

- Strong audit trail due to biometric
- Available in 11 Indian languages as well as in Thai and Malay.
- In-depth Evaluation (including illiterate workers)
- Safety Training scheduling with email/sms reminders.
- 360 degree safety training coverage

More than 500 + successful installations..

Please call us today to know more about STK : The Safety training kiosk ...



COVID 19 Safety Instructions Included

Eight pre-loaded safety program suitable for Visitor, Shopfloor, Driver, Work permit



020 25281608 / 9326727467
sales@scrum-system.com
www.scrum-system.com



Vizor Connect welding helmet from Fronius: Intelligent occupational safety

The Vizor Connect is the world's first welding helmet that communicates with a power source via Bluetooth. This means that it darkens prior to ignition rather than waiting until the arc is lit. The helmet also eliminates the problem of interference from external light and reliably darkens even in demanding welding situations, ensuring a higher degree of both safety and comfort



Using Fronius PreTrigger technology, the power source sends a signal to the welding helmet via Bluetooth as soon as the user presses the on button on the welding torch. The helmet therefore darkens before the arc is ignited. This protects users against the abrupt flash of light that would previously appear before the helmet darkened. This completely protects the welder's eyes from welding light and reduces tiredness.

The auto-darkening filter cartridge remains in place even at the lowest currents and if the arc is concealed and in constrained positions, as long as the arc



is burning. This is because the helmet reliably responds to the signal sent by the connected power source. This improves occupational safety for the welder. The level of protection applicable to the welding process is automatically adjusted between DIN 5 and DIN 12. The darkness level is therefore perfectly adapted to the intensity of the arc at all times. The welder also has the option of switching to manual mode and infinitely adjusting the darkness as required.

A clear view at all times

A further advantage is that the Vizor Connect eliminates the problem of interference from external light. Conventional welding helmets sometimes darken at inappropriate times as a result of light reflections, warning lights, or external welding light. Not the Vizor Connect. The helmet provides ideal protection during activities before and after welding, including grinding. When the welder disconnects the Bluetooth con-

nection between the helmet and the power source, the Vizor Connect acts like a conventional protective helmet and darkens in the presence of light sources as of a certain intensity.

When the helmet is not darkened, it provides a clear view with a brightness level of 2.5 as well as real colour perception thanks to a specially developed UV and infrared filter. The auto-darkening filter cartridge with nose cut-out gives the welder an unobstructed line of sight and makes the helmet extremely comfortable to wear. The special shape increases the field of view up to six times and reduces the weight of the helmet.

Website: www.fronius.com

AMBETRONICS

FLAME DETECTOR UV & TRIPLE IR (FLD-3311-FLP)

Multi-Spectral Sensitivity of Fire/Flame

Long Distance Detection and High False Alarm Immunity

High Sensitivity Combined with Fast Response Time

Red Flasher

90 dB Hooter

Multiple Output Options

- 4-20 mA
- 3 Relays
- RS-485
- HART (optional)

Flameproof tested enclosure Ex d IIC T6 IP66

Also available in Stainless Steel & Weather Proof enclosure
Optional UV & 2 IR, UV & IR, only UV detector available



17-B Tarun Industrial Estate, Mogra Pada, New Nagardas Road, Andheri (E), Mumbai-400069

WhatsApp:- +91 9320619646 / 9320737646 Tel:-+91 22 61673027/ 56

Email Id:- project@ambetronics.com / sales11@ambetronics.com

Web:- www.ambetronics.com



Matrix SATATYA SAMAS for centralized management and control

Matrix SATATYA SAMAS is a Video Surveillance Management solution specifically designed to meet the diverse and complex needs of large enterprises having multiple sites connected to a central location or a large, single site. SATATYA SAMAS is designed on four pillars:

- Control - ease of use
 - Advanced Video Analytics - preventive security
 - Intelligent Features - bandwidth and storage optimization
 - Integration with Peripheral IP Systems - seamless operation
- With expandability up to 65,535

cameras, 10,000 locations, and unlimited users, SAMAS can meet requirements of any large organization. SATATYA SAMAS can also be integrated with other solutions such as Weighbridge, POS, ATM, Access Control, Time-Attendance, Fire Alarm, and Building Management System to strengthen security.

Access control solution for modern organizations

Matrix COSEC range of Access Control solution supports comprehensive three-dimensional Access Control policies, which takes care of all combinations of who, where and when. Further, it offers 25+ enterprise-grade access control features meeting all industry-specific access control and compliance needs. Dual enrollment options (reader and web) and web-based configuration eliminate the need for a PC, server or special software. Matrix COSEC also offers instant SMS and Email notifications and plethora of industry-standard reports. Finally, open APIs for integration with Matrix and other third-party solutions such as time-attendance, payroll, video surveillance; BMS, fire alarms, etc. make Matrix COSEC, one of most advanced solutions in the industry.



Benefits

- Enhanced flexibility
- Seamless working with single source
- Eliminates need of multiple panels
- Enhanced reliability and scalability
- Higher operational abilities
- Interoperability
- Simplified installation

- Integration with fire alarm and other devices
- Secures sensitive areas with advanced access control features
- Cost-effective

For more information,
www.matrixvideosurveillance.com



SAFETY FIRST

ONLY ECO FRIENDLY

Maintenance Free Earthing System




'GALAXY'

SIMPLIFIED LIGHTNING PROTECTION SYSTEM

RANGE OF PRODUCTS



GLOBAL SOLUTION FOR EARTHING (GROUNDING)



GALAXY EARTHING ELECTRODES (P) LTD.

(An ISO 9001-2015 Certified)

Regd.Off: K.M.Complex, 1st Floor, No.23, Jawaharlal Nehru Road, (100 Feet Road) Arumbakkam, Chennai - 600 106. INDIA
 Phone: +91-44-23635996, 23635547, Mobile: +91-9940023932, 8939565802 Fax: +91-44-23635550
 Email: galaxyearthing@gmail.com, galaxiearthing@yahoo.co.in
 Website: www.galaxyearthingelectrode.com
 Factory: Ambattur Industrial Estate (S.P.) Chennai - 600 058. INDIA

COVID-19 Pandemic: A Review

- R. Rajasekharan Nair & Vinod R. Alappad

This article is an abridged version. The original version is available in the website: isrmag.com

1.0 INTRODUCTION

Ever since the World Health Organisation (WHO) has declared the Corona Virus Disease as Pandemic, the entire world is passing through a grave situation. The War against corona virus i.e. COVID-19 is on throughout the world. The situation in some countries are very severe and already affected the socio-economic fabric of the country itself.

The first three cases of COVID-19 were reported in India from the three districts of Kerala viz. Thrissur on 30th January, 2020; Alappuzha on 2nd February, 2020 and Kasaragod on 3rd February, 2020.

2.0 HISTORY OF PANDEMICS

Throughout history, there have been a number of pandemic diseases such as Smallpox, The Plague, Spanish Flu, HIV/AIDS, and so on. Smallpox, is the highest killer amongst the pandemics, which killed about 500 Million people.

3.0 GLOBAL SCENARIO

The Global Scenario of COVID-19, are presented here through various charts and graphs (See Fig 1 to 6). As on 26th April, 2020, at 2230 hrs. IST, there were 29,66,488 Confirmed Cases of Coronavirus in the globe and out of which 2,05,686 persons Died. On this date there were 18,89,477 Active cases in the hospitals. As on this date 8,71,325 persons got Recovered, out of the total confirmed cases (See Fig 01). Amongst the countries, USA topped the list of countries with 9,70,757 confirmed Coronavirus cases, which is 32.72% of the total confirmed cases reported in the world (See Fig 02). It may be noted from the

figure, that 5 European countries viz. Spain, Italy, France, Germany and UK have Coronavirus cases ranging from 1.5 Lakhs to 2.3 Lakhs, which together shared 30.20% of Coronavirus cases reported in the world. Incidentally, all the above countries are partially or fully locked down to contain the spread of virus. The USA also accounts for the highest number of Coronavirus deaths (54,941) in the world, which is 26.71% of the total Coronavirus deaths reported in the world (See Fig 03). Though Coronavirus has originated from China, the death toll figure released by the Chinese Government still stands at 4,632. As far as the active cases are concerned, USA

has 7,97,183 cases, which is 42.19% of the total Active Coronavirus cases in the world (See Fig 04). As far as the recovered persons are concerned, amongst the leading nations, USA takes the lead with 1,18,633 recovered persons (See Fig 05). With regard to testing of Coronavirus cases, the USA leads with 53,53,358 tests (See Fig 06). Though, Russia had tested the second highest number of Coronavirus samples in the world i.e. 28,77,699, the confirmed cases has not drastically reduced, which stood at 80,949 cases.

4.0 INDIAN SCENARIO

The Indian Scenario of Coronavirus are presented through various charts and

graphs (See Fig 7 to 13). As on 26th April, 2020, at 2230 hrs. IST, in India, 27,886 persons got infected with COVID-19, out of which 880 persons died. On this date, 6,523 persons have been recovered and 20,483 persons are still under treatment for Coronavirus (See Fig 07). Amongst 36 States and Union Territories, the Maharashtra is on the top of the list with 8,068 confirmed cases of COVID-19, which is 28.93% of the total confirmed Coronavirus cases reported in the country (See Fig 08). Incidentally, Mumbai city alone have contributed 5,407 out of the 8,068 confirmed cases reported in Maharashtra. Seven States viz. Gujarat, Delhi, Rajasthan, Madhya Pradesh, Tamil Nadu, Uttar Pradesh and Andhra Pradesh have higher incidence of Coronavirus cases, which together shared 58.63% of the Coronavirus cases reported in the country. The rest of the States and Union Territories shared only 12.44% of the cases reported in the country. Though the Kerala had reported the first case of COVID-19, about 85 days

ago, it has contributed only 1.68% (469 cases) of the total cases reported in India, which is commendable. Maharashtra also accounts for the highest number of Coronavirus deaths (342) in the country, which is 38.86% of the total Coronavirus deaths reported in the country (See Fig 09). As on 26th April, 2020, there were 20,483 persons admitted in various hospitals in India for Coronavirus treatment (See Fig 10). The number of persons recovered from Coronavirus cases are shown in Fig 11. Incidentally, it may be added here that the Alappuzha Medical College Hospital, Kerala, has the distinction of curing the first Coronavirus patient in the country. The progression of the Coronavirus cases in India from 30th January, 2020 to 26th April, 2020 is shown in Fig 12. It may be seen that, between the 26th March, 2020 and the 26th April, 2020, there has been a steep rise in the Coronavirus cases in the country. Incidentally, this steep rise had happened during the periods of National Lockdowns. Had the lockdown not been

implemented, the figures would have gone up much higher, probably in lakhs. The top 10 States infected with Coronavirus as on 26th April, 2020 is also shown in Fig 13.

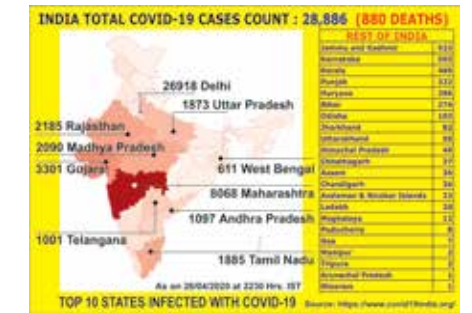
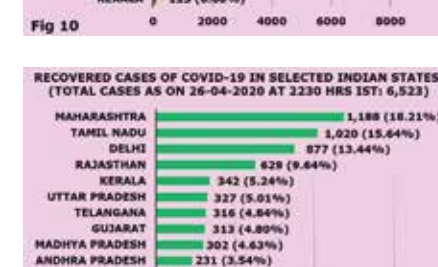
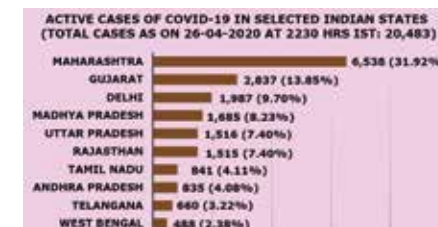
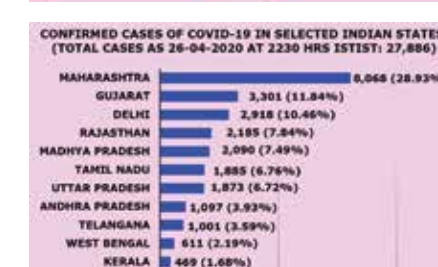
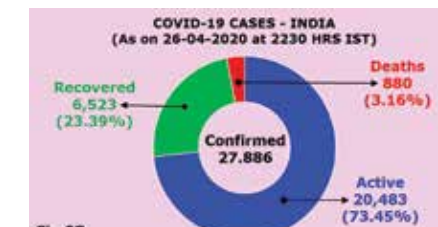
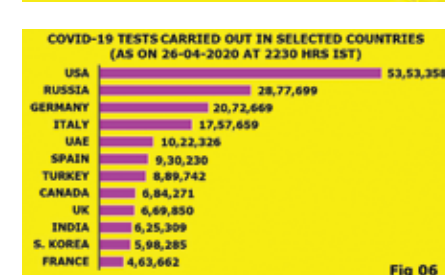
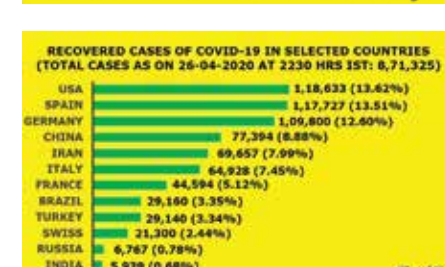
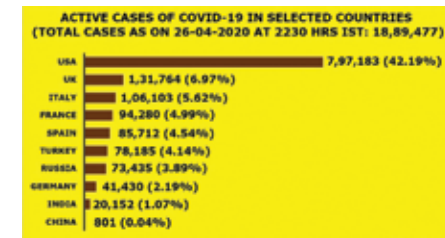
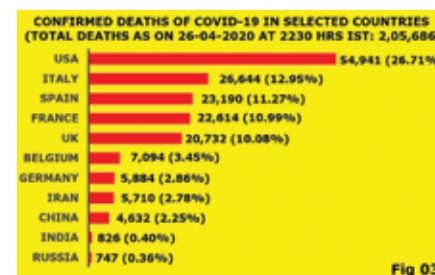
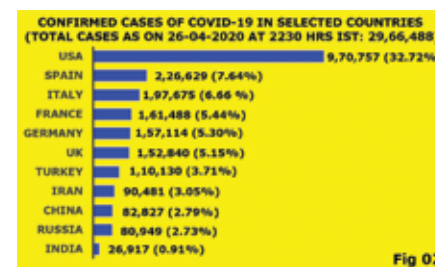
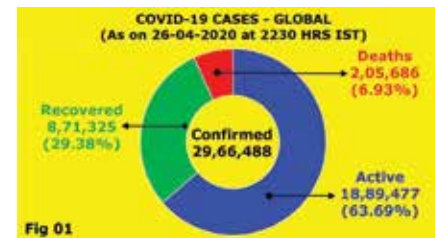


Fig 13: Top 10 States of India infected by COVID-19 cases.

5.0 ABOUT THE VIRUS

The coronavirus pandemic is an ongoing pandemic caused by SARS-CoV-2 (Severe Acute Respirator Syndrome Corona Virus 2). The outbreak was first identified in Wuhan, Hubei, China, in December 2019, and was recognized as a pandemic by the World Health Organization (WHO) on 11th March, 2020.

Coronavirus, which primarily affects the upper respiratory tract in people, are transmitted through respiratory droplets.

6.0 SYMPTOMS OF COVID-19

Common symptoms include fever, cough, and shortness of breath. Complications may include pneumonia and acute respiratory distress syndrome.

7.0 TRANSMISSION OF VIRUS

It is primarily spread during close contact and by respiratory droplets produced when people cough or sneeze; with close contact being within 1 to 2 meters (3 to 6 feet).

According to the World Economic Forum and Reuters, the Coronavirus spreads much faster than other viruses such as MERS and SARS. According to this report, MERS virus took 903 days to infect first 1000 people, whereas, SARS took 130 days and Coronavirus took only 48 days to infect first 1000 people.



8.0 TESTING OF VIRUS

There are several ways to test for the new strain of coronavirus such as molecular tests, serological tests, imaging tests, antigen test.

Molecular tests look for signs of an active infection. They usually involve taking a sample from the back of the throat with a cotton swab. The sample will undergo a Polymerase Chain Reaction (PCR) test. This type of test detects signs of the virus's genetic material. A PCR test can confirm a diagnosis of COVID-19.

9.0 THE DEVELOPMENT OF VACCINE

As of today, there is no COVID-19 vaccine, though many organizations are working to develop one.

With the genetic information of the Novel Corona Virus (SARS-CoV-2) available online, governments across the globe, top private players, academics and no-for-profit organisations are working at a breakneck pace to find a COVID-19 vaccine.

10.0 DRUG FOR COVID-19

There is no medicine for COVID-19 so far. However, some countries use Hydroxychloroquine – a drug used for the treatment of Malaria – for treatment of COVID-19.

11.0 PREVENTIVE MEASURES

Strategies for preventing transmission of the disease include Hand washing, Respiratory hygiene, Social Distancing, Self-isolation. The use of Disinfection Gateway, Facemask Disposal Bin, Personal Protection Equipment, PPE Kiosk., etc. will enhance the effectiveness of the preventive measures.

12.0 LOCKDOWN

Lockdown is one of the measures adopted by any government to contain the transmission chain of a pandemic.

India had imposed a 21-Day National Lockdown on 25th March, 2020, much earlier than many countries, including China, which failed to contain the

initial spread of the virus. During the lockdown, India had adopted the containment measures of screening, testing, isolating and contacts tracing. The March 25th Lockdown was expired on 14th April, which was extended up to 3rd May, 2020.

According to the health ministry, around 30% of the total confirmed cases of COVID-19 in India are linked to the Tablighi Jamaat event held in mid-March at Nizamuddin Markaz in New Delhi.

On 16th April, 2020, the Government of India has declared 170 districts in India as Hot Spots for COVID-19 (See Fig 20). In the figure, the hot spots are marked in red. The 170 hot spots are further divided into two categories, viz. 123 districts that have seen large outbreaks and 47 hot spot districts with 'clusters.'

IDENTIFYING HIGH-CASELOAD ZONES

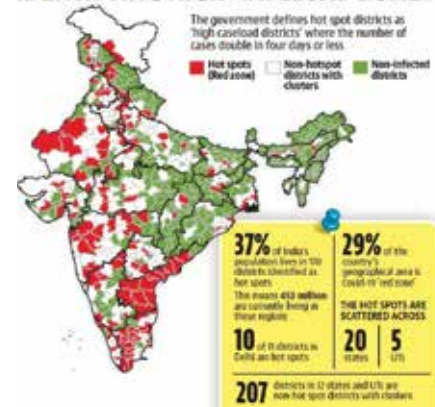


Fig 20: COVID-19 hotspots declared by the Government of India. Courtesy – The Hindustan Times.

13.0 CONCLUSION

Stringent measures are to be resorted along with the implementation of a well-planned economic package, so that the collapsed economy can be revived. The economic package should have a meaningful thought with a view to boost the production and employment in all sectors. Let us continue our war against COVID-19. To succeed our fight, we should, **KILL THE COVID-19 BEFORE IT KILLS US.** ISR



Mr. R. Rajasekharan Nair is currently the Director of Safety and Health Information Bureau.

He can be contacted on:
M: +91 7045172050, +91 9224212544
E-mail: ceo@shib.co.in
rajan.shib@gmail.com
Website: www.shib.co.in



Mr. Vinod R. Alappad is Director (Technical) in Safety and Health Information Bureau.

He can be contacted on:
M: +91 9821662435, +91 9702986790
E-mail: vinod.shib@gmail.com
Website: www.shib.co.in



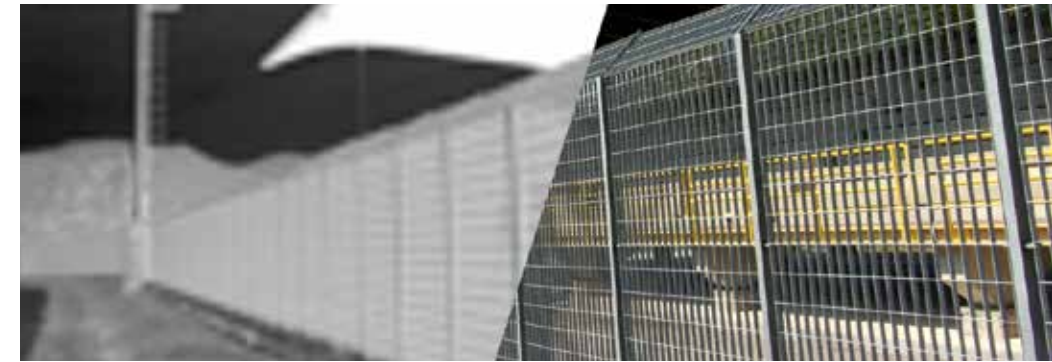
Ensure enhanced perimeter protection with Hikvision Thermal Products

The latest generation of cost-effective thermal cameras from Hikvision make it faster and easier for small and medium businesses to secure their perimeter – even in the dark, and in challenging weather conditions such as fog, heavy rain, and snow.

By Prama Hikvision India

The perimeter is the first line of defence against intruders who could put people or assets in danger. How to ensure detection and response to perimeter intrusions quickly and effectively, even in low-visibility conditions?

For many forward-looking businesses, the answer is to deploy thermal cameras, which offers a number of advanced benefits.



The ability to 'see' intruders in low-visibility conditions

In complex light environments, at night, or in severe weather conditions, many conventional 'visible light' cameras may not be able to recognize intruders and alert security teams. By contrast, thermal cameras can recognize tiny changes in temperature, allowing them to detect people or vehicles that cross perimeter boundaries even in extremely low-light or low-visibility conditions.

Human and vehicle recognition for minimal false alarms

Some thermal cameras incorporate deep learning algorithms to distinguish humans and vehicles from animals, falling leaves, & other moving objects that could otherwise trigger false alarms. This means that intrusion alarms are only triggered when a real perimeter threat is identified, which supports a faster response with far less time spent analyzing footage and investigating false alarms.

Increased efficiency for perimeter protection

Another key benefit of thermal cameras is that they are effective at longer distances than many conventional 'visible light' cameras. This means that small and medium businesses can reduce equipment and installation costs for their perimeter-protection solutions, while also monitoring camera feeds with fewer team members.

Hikvision thermal cameras for perimeter protection

Hikvision offers a range of affordable thermal cameras that are ideally suited for perimeter protection in small and medium applications such as residential areas, office buildings, car parks, factories, stores, and even museums.

With Hikvision's leading thermal camera range, detection in real time of people or vehicles that breach perimeter defences is made possible, even in low-light and poor-visibility conditions. As an added benefit, overlay of traditional video images on top of thermal camera

images is possible, which ensures availability of evidence needed to support legal processes or insurance claims in the event of a perimeter breach.

Hikvision thermal cameras in action

Hikvision's range of thermal turret, bullet, and speed dome cameras are already being deployed in many perimeter protection solutions for housing developments, car parks, factories, stores, farms, and even museums.

In one example of a successful project, a leading car brand is protecting one of its European dealerships 24 hours-a-day with Hikvision thermal cameras. In this case, the Hikvision camera alerts security teams if perimeter defences are breached,



For more information, www.hikvisionindia.com

Gas Detection Solution for industrial boiler room



In boiler rooms, installing gas sensors at strategic locations can prove instrumental in providing early warning of a gas release and prevent potentially catastrophic events

Industrial boiler rooms use natural gas for heating. At these plants a gas leak or incomplete combustion can result into an explosive hazard or a high concentration of carbon monoxide may result in loss of life, structural damage, or expensive waste of fuel. Gas leaks often go undetected at these facilities as the boiler is not occupied frequently.

Potential Gas build-up in Boiler Rooms: Natural gas is a combustible gas with a rapid expansion rate, is composed mainly of Methane. It is nearly half the weight of air and rises to the ceiling or roof space of a boiler room.

Carbon Monoxide is a deadly toxic gas produced by the incomplete combustion of hydrocarbon fuels such as Wood products, Natural Gas, Fuel Oils and Coal.

Continuous gas monitoring and detection system will provide early warning of a gas release and prevent potentially catastrophic events.

Gas Detection System for Boiler Room
In boiler rooms, gas detection systems consist of installing gas sensors at strategic locations.

For gases that are lighter than air – such as methane – the detector will be placed above the burner. For gases heavier than air – such as butane or propane – the detector will be placed below the burner.

When gas is detected, alarm relay contacts within the control panel activate audio and visual alarms. If the gas concentration continues to reach a higher level, additional relays cut power to electrically operated solenoid valve connected to the gas supply.

Common Sensor Placement:

- Gas Burner Assembly
- Gas Shutoff Valve
- Gas Meter
- Gas Train Assembly
- Pressure Booster



Ashish Shah, Managing Director
Ambetronics



Tel: 022-61673029
Mobile: +91-8657493788
Email: sales11@ambetronics.com
Website: www.ambetronics.com



Foam Nitrile Coating (Sumo)

The Gloves are knitted on computerized knitting machines using different threads or yarns like Poly-Cotton, Polyester, Para Aramid, Nylon & than the coating of different Polymers like PVC, Latex, Nitrile, Polyurethane etc. done on sophisticated machines/ automated dipping lines under stringent quality control to meet the superior quality to satisfy the customer requirements keeping in mind the high level of safety. The Palm Coated Gloves offer excellent dexterity, comfort & to perform the job of general handling light to heavy handling. Handling of sheet metals, Assembly of small components.

Features & Benefits
This specific formulation of foamed



Nitrile offers excellent dexterity with secured dry & oily grip while providing greater breathability. The superior dexterity for most tactile of applications.

Application

- Components Handling
- General Assembly
- Electronics Industries
- Light Engineering work



For more information,
Website: www.marvelgloves.com

Ensure instant backup lighting with Prolite Emergency Conversion Module

With Prolite Emergency Conversion Module, your existing lights can double as mains-cum emergency lighting units in case of black out or power outage. Thus, providing adequate emergency lighting essential for life safety programme, while ensuring no disturbance to the internal décor of the place

In a market that is constantly growing and expanding, it is indeed a challenge to keep up with the latest in technologies and modernization. PRO-LITE has always worked towards taking its product ranges to the next level and that too at affordable prices through sustained R&D work by its dedicated team. No wonder our older clients swear by us and new ones bond with us easily and readily when they realize what we have on offer.

An emergency situation can arise anytime without warning and even people familiar with surroundings could find it difficult to exit from a pitch dark area or a smoke filled room in time without the support of illumination. In emergency situations where quick evacuation of premises becomes a priority, our products instantly provide the best solutions possible.

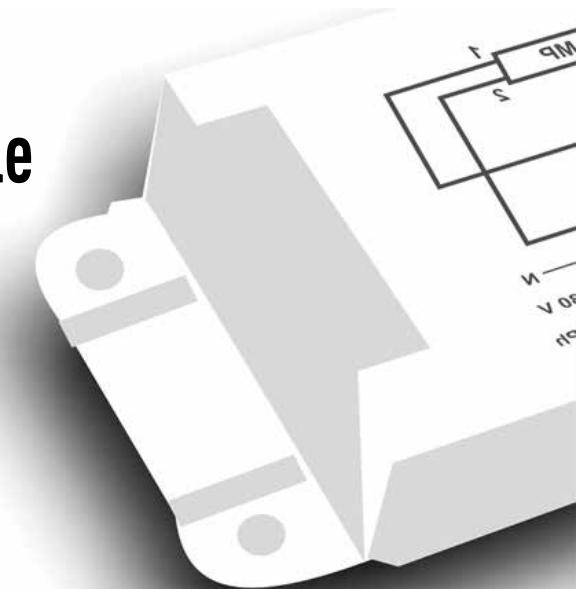
Our products have proven, optimum utility in ground level as well as high rise situations. Whether it be a multi-story structure or a sprawling stadium expanding vertically or horizontally or both, we have focused and specific

products to suit all kinds of eventualities such as blackouts, fires, explosions or any other.

Convenience with aesthetics is another way to describe our range of conversion modules. They are compact and manufactured to suit all standard brands and types of lighting be it Halogen bulbs, CFL lamps, FTL lamps or LED's. All you need to do is to give us full details of your existing lighting system and our module can be made to order and fitted to them to suit the specifics of existing lighting to provide backup support for as long as you may need. In case of black out or power outage, your own existing lights will double as mains-cum emergency lighting units till the crisis blows over.

What is (PECM)?

PECM have become a synonym for such aesthetic emergency lighting commonly referred as CONVERSION MODULES, it provides instant backup lighting when the normal power fails. These units as the name suggests are used for converting existing luminaire into emergency



one. Each unit works in conjunction with the existing ballast to convert new or existing luminaire fittings into emergency equipment with the help of PECM.

Operation

When normal main supply fails, the PECM sense the power failure and immediately switched to the emergency made illuminating single or multiple lamps as the case may be for a minimum period of 10 minutes. When the mains power is restored the PECM returns to the charging mode until the next power failure. The battery fully recharges within 16 to 24 hrs.

These features of PECM make them an ideal power source whenever interruption in power for a short time creates inconvenience and confusion.



PROLITE
EMERGENCY LIGHTING SOLUTIONS

AUTOGLO
PHOTOLUMINESCENT SIGNAGES

For more information,
Website: www.prolite.in



Hikvision Smart Parking Solutions: The power of intelligent parking management

Hikvision's state-of-the-art smart parking solutions can improve the management, security and profitability of parking lots, thanks to an array of new and intelligent features

By Prama Hikvision India

Parking can be a major chore for shoppers and commuters alike. Hunting around for a free space wastes time, which is frustrating at the start of the working day for commuters, and a disruption to the shopping experience for retail customers.

Parking lots that are close to town centers or attached to popular retail and entertainment facilities can be especially problematic. During rush hour or times of high customer flow, congestion can build at entrances and exits, resulting in lengthy queues. Given the extent of customer frustrations – and the rising costs of land on which parking lots are situated – organizations must make the most efficient use of the space available. In fact, those who succeed in doing this can potentially turn parking into a competitive advantage.

Smart parking solutions

State-of-the-art smart parking solutions can improve the management, security and profitability of parking lots, thanks to an array of new and intelligent features.

Simpler entrance and exit management

Smart parking solutions can integrate the latest barrier technology with industry-standard automatic number plate recognition (ANPR) cameras, to make entering and leaving parking lots much more efficient. By rapidly identifying vehicles and sending this data to the barriers, intelligent cameras can speed up vehicle flow and can minimize queues, improving the productivity of



the whole parking site.

When it comes to payment for parking, organizations can also integrate an ANPR system with a third-party ticketing system, to make the customer experience even smoother.

Intelligent parking guidance

Parking guidance cameras can automatically monitor the availability of spaces. One camera can have visibility of multiple spaces, and intelligently detect if there is a vehicle in each one. This information is sent to a guidance terminal, which then calculates how many spaces are occupied or available, and informs customers via parking guidance screens installed at critical junctions of the parking lot.

In addition to this, a dynamic lighting indicator system can be incorporated to guide driver straight to available spaces, helping to ensure they can always park their cars quickly.

'Find My Car'

A holistic smart parking solution can also improve driver safety and offer them peace of mind, by helping them to locate their cars efficiently when they return to the parking lot. Using touchscreen Query Kiosks located at the entrances, drivers can simply enter their license plate details to locate their vehicle on a schematic floor map. The system can also give them the shortest and quickest route to it.

The Hikvision smart parking solution gives parking operators everything they need to improve their daily operations, from entrance & exit management, to parking guidance and customer vehicle location. It can optimize the use of parking lots, boost the flow of vehicles, and enhance driver satisfaction – which means parking is always efficient and cost-effective.

For more information,
www.hikvisionindia.com



5 SIMPLE TASK To Keep You & Other Healthy



Stay **home**
stay safe



Wash your **hands**
frequently



Flex your elbow,
when you **cough**
or sneeze.



Cover your face
with **mask**.



Avoid **Close Contact**
Everywhere with People.

With current situation in global, it is most important to help do your own part to prevent/prohibit the spread of novel coronavirus. Taking care of these 5 task whenever you and other may be to help flatten the curve.

FOR MORE DETAIL ON NOVEL CORONAVIRUS KINDLY VISIT OUR BLOG

www.krmcorporation.com/blog

PPE/UTILITY BAG-POUCH

Better way to keep *Mask, Respirator, Gloves, Goggles, Disposable Cap*

So whenever require to wear that you can wear.



LIKE , FOLLOW , SHARE



+91 98 1029 1381, +91 8800 544 881

rajinderwadhwa

+91 129 402 1381, 413 1381

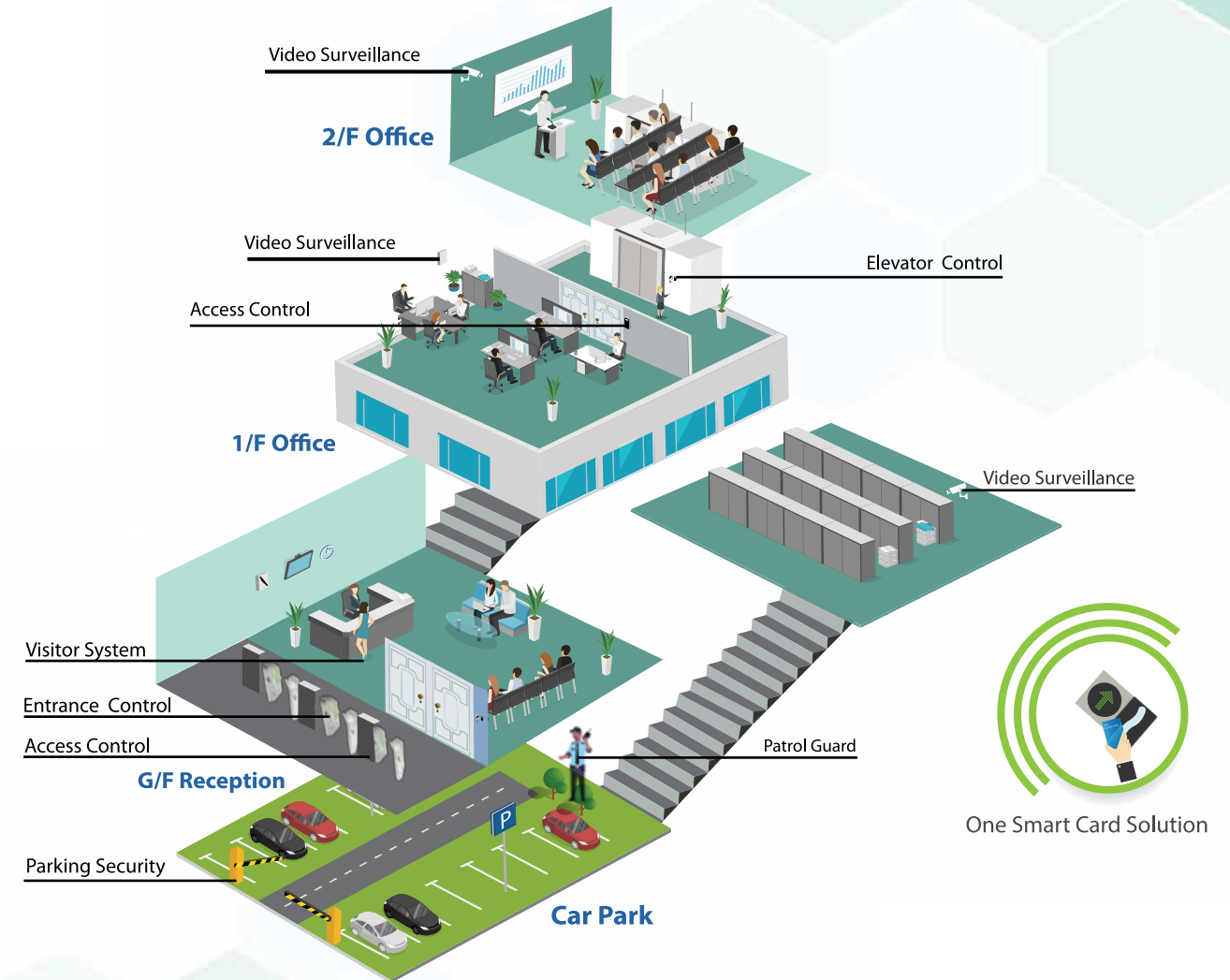
www.krmcorporation.com www.krmloto.com info@krmloto.com krmloto@gmail.com

ZKBioSecurity

"All In One" Web Based Biometric Security Solutions

ZKTeco

Your Trusted AI Biometric Identification Technology



One Smart Card Solution

Features :

- Access control, video linkage, elevator control and visitor management "All in One"
- Global Anti-passback and Linkage
- Support 3rd party video devices
- Massive device capacity (Up to 2,000 doors in single server and 8,000 doors in Multi-server)

The Leader Of Security & Time Management Solutions



Mobile APP

Desktop



ZKTeco Biometrics India Pvt. Ltd.
Global R&D Center Bangalore
Address: Survey No 01/01, Outer Ring Road,
Mahadevpura, Bengaluru, Karnataka 560048



Sales

Contact : 080 6828 1300
Email ID : india@zkteco.com



Technical

Contact : 080 6828 1342/48
Email ID : india@zkteco.com

Follow us on



Website : www.zkteco.in

SAY NO TO FIRE & SMOKE, YES TO SAFETY.



LSOH



PVC

AKALMAND BANO, SAHI CHUNO.

RR KÄBEL
WIRES & CABLES



REACH +
RoHS +
CPR Compliant



Email : rrkabel@rrglobal.com | Website: www.rrglobal.com | Follow us    

